

Southern Union Career Technical Education Core Indicator Performance Trend Analysis

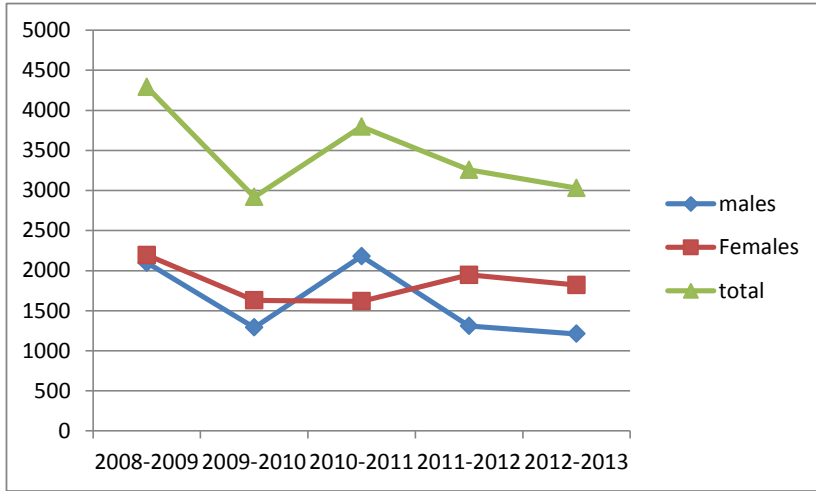
	2	3	4	5	6
	2008-2009	2009-2010	2010-2011	2011-2012	2012-2013
1P1 - Concentrators attaining technical skills					
Target Performance	50	78	80	86	87.56
Actual Performance	79	82	87	81	88.93
2P1 - Concentrators earning award/credentials					
Target Performance	46	52	58	58	60
Actual Performance	81	77	78	86	69
3P1 - Concentrators remaining enrolled					
Target Performance	90	69	70	75	76.86
Actual Performance	97	100	85	74	85.01
4P1 - Student placement					
	2008-2009	2009-2010	2010-2011	2011-2012	2012-2013
Target Performance	80	82	84	79	80
Actual Performance	71	58	80	60	81.65
	89%	71%	95%	76%	102%
5P1 - Nontraditional student participation					
Target Performance	11	11	13	18	18
Actual Performance	13	65	14	13	46.38
5P2 - Nontraditional student completers					
Target Performance	11	11	12	13	14
Actual Performance	8	23	15	14	12.27

CTE Participants

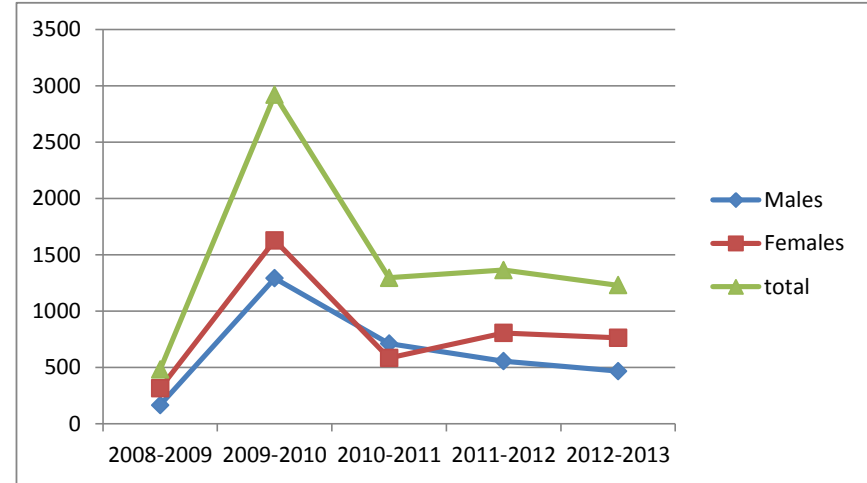
	2008-2009	2009-2010	2010-2011	2011-2012	2012-2013
males	2098	1291	2179	1309	1211
Females	2194	1628	1618	1947	1820
total	4292	2919	3797	3256	3031

CTE Concentrators

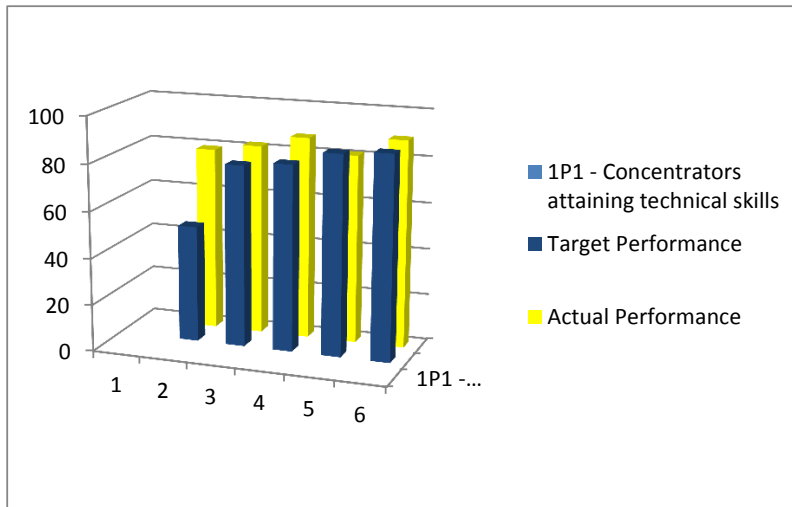
	2008-2009	2009-2010	2010-2011	2011-2012	2012-2013
Males	166	1291	712	557	468
Females	315	1628	584	807	762
total	481	2919	1296	1364	1230



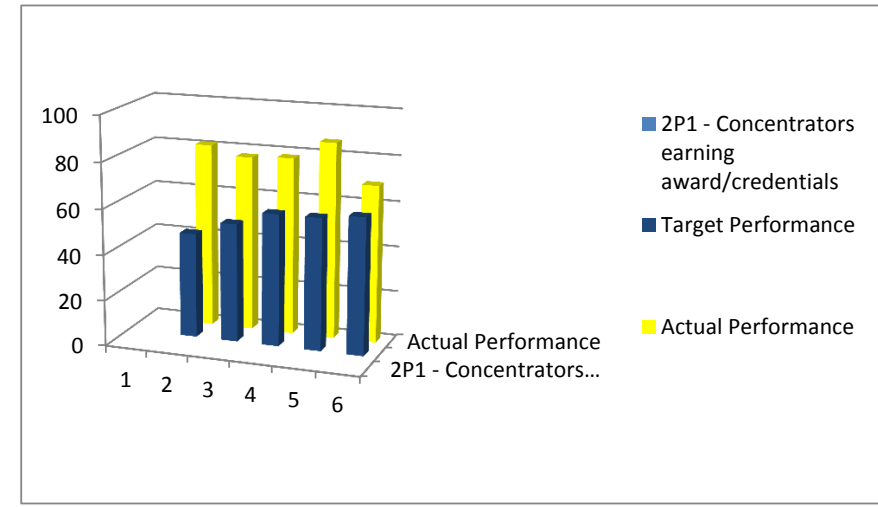
CTE Participants



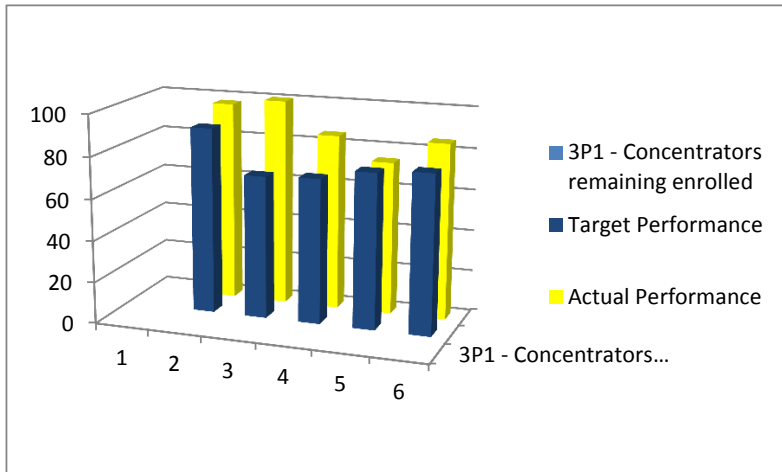
CTE Concentrators



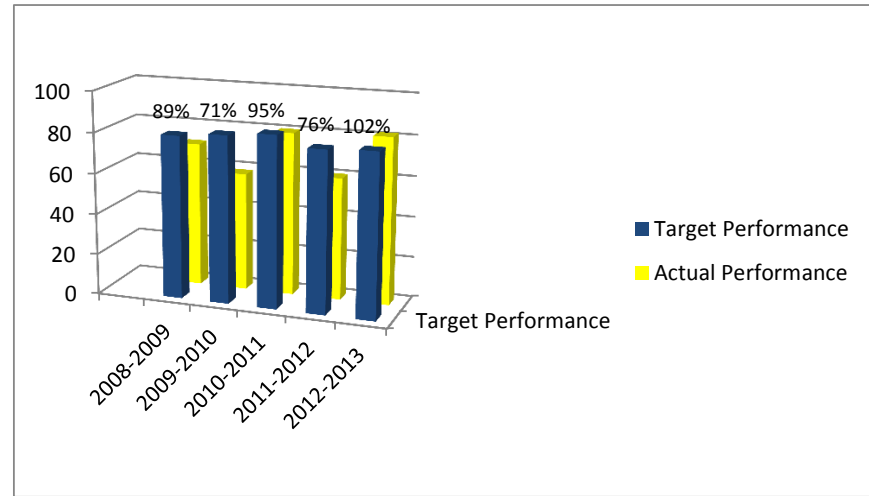
1P1 Concentrators attaining technical skills



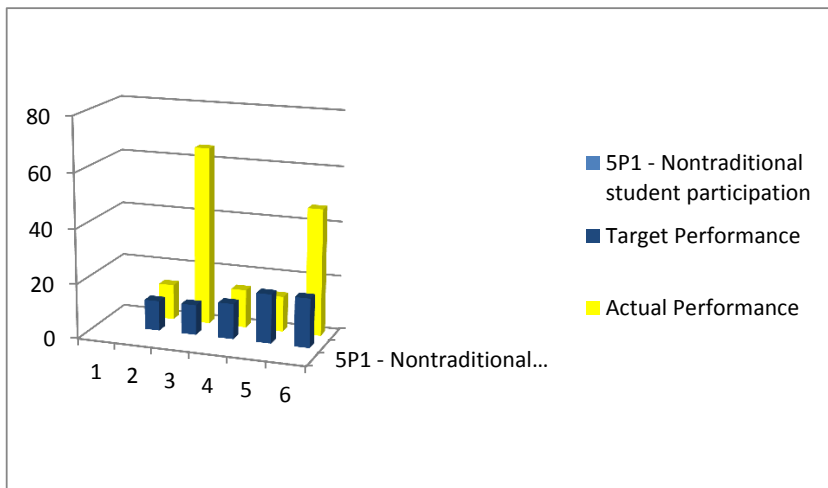
2P1 Concentrators earning award/credentials



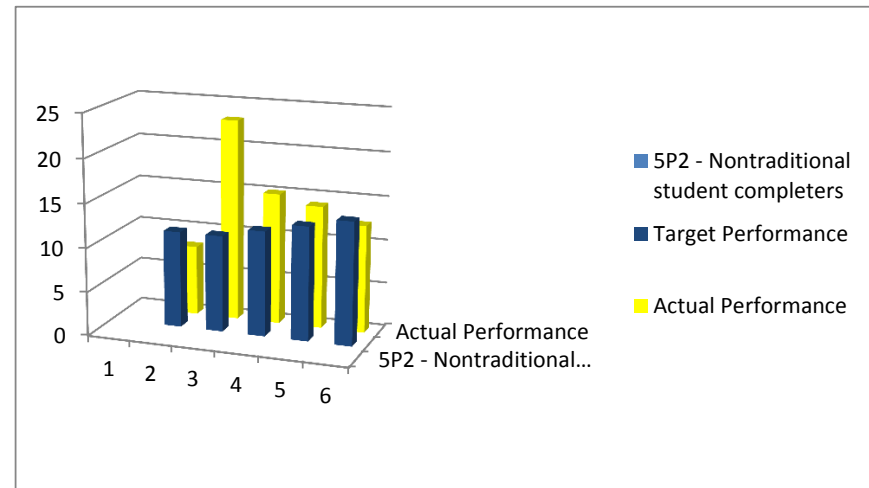
3P1 Concentrators remaining enrolled



4P1 Student Placement



5P1 Nontraditional Participants



5P2 Nontraditional Completers